



# VETROMARKET

*di Francesco Vistocco*

**LA PIU' MODERNA TECNOLOGIA APPLICATA ALLA TRASPARENZA,  
SOLUZIONI E SISTEMI TECNICI PER IL VETRO.**

**ELEGANZA, ESTETICA, DESIGN E FUNZIONALITA'.**

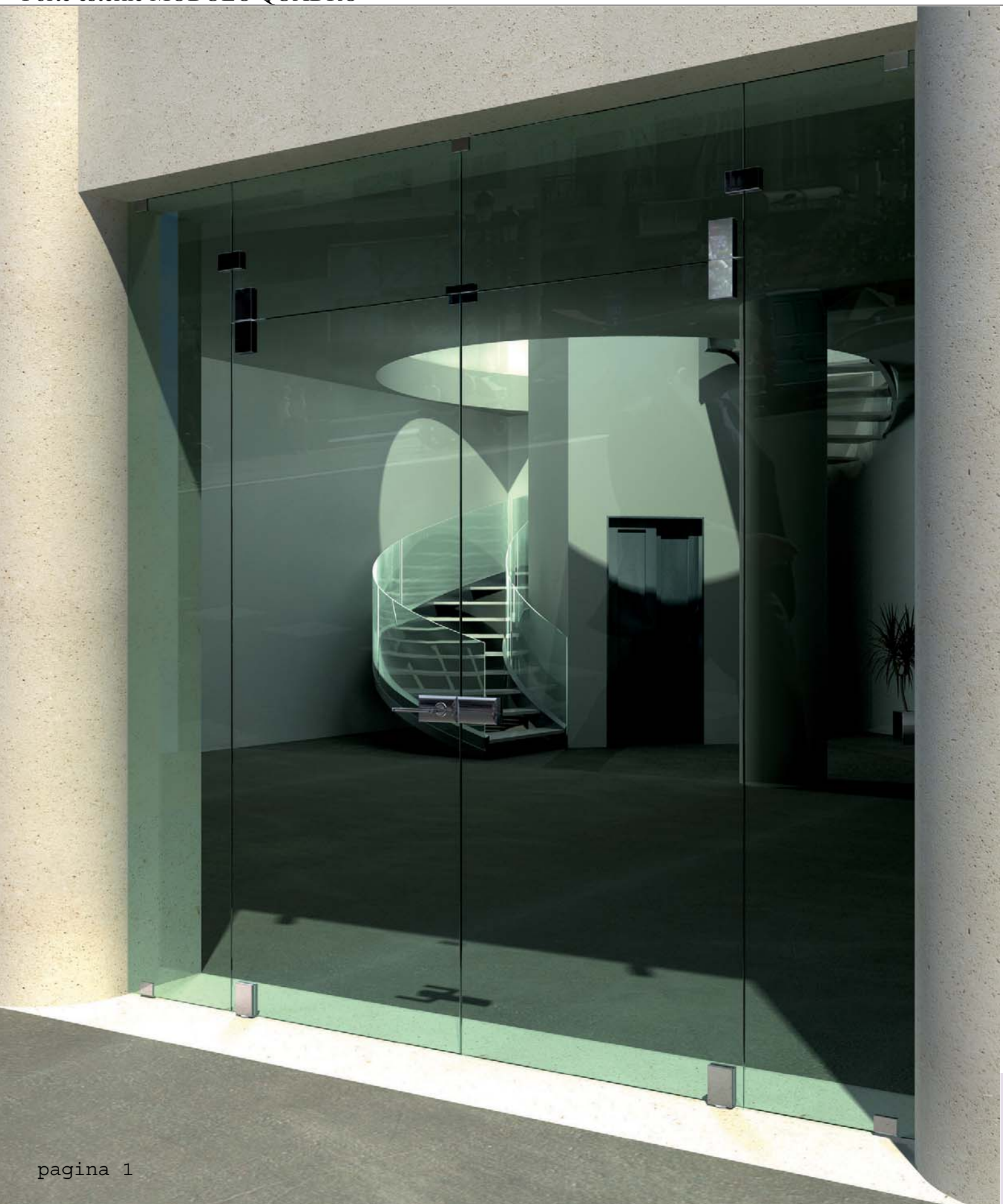
# VETROMARKET

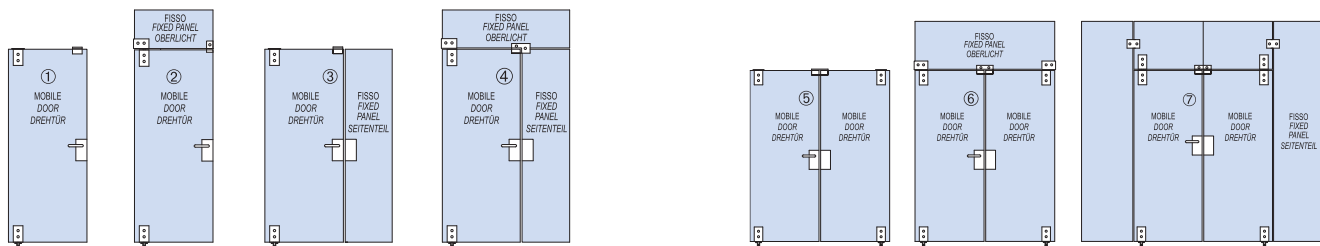


# VETROMARKET

*di Francesco Vistocco*

Porte esterne MODULO QUADRO





**MQ-1**  
Cerniera inferiore / Lower door



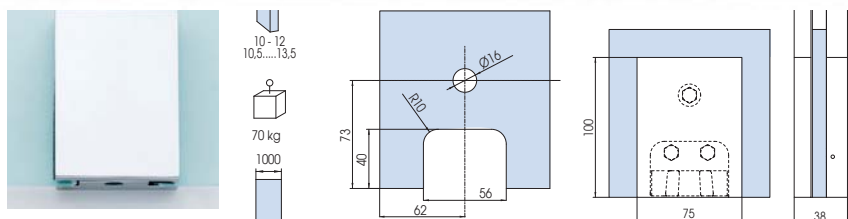
# VETROMARKET

di Francesco Vistocco

Cerniera inferiore per pompa Italia,  
Bottom pivot hinge for square closer  
Unteres Pendeltürband  
für Bodentürschließer mit Vierkant

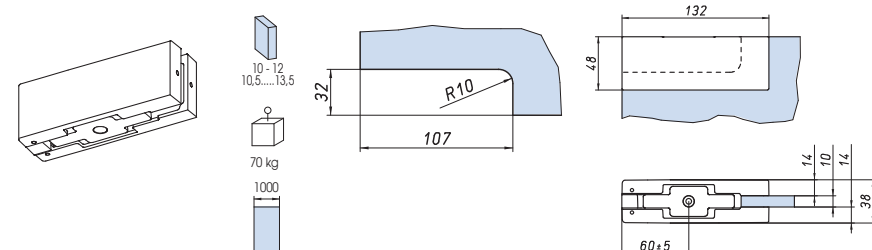
**MQ-2-T**

Cerniera inferiore per pompa Tedesca,  
Bottom pivot hinge for german closer  
Unteres Pendeltürband für  
Bodentürschließer mit flachkonischer Achse



**MQ-11**

Cerniera inferiore/superiore registrabile,  
Top/Bottom patch with regulation  
Oberer/Unterer Eckbeschlag  
mit verstellbarem Lager

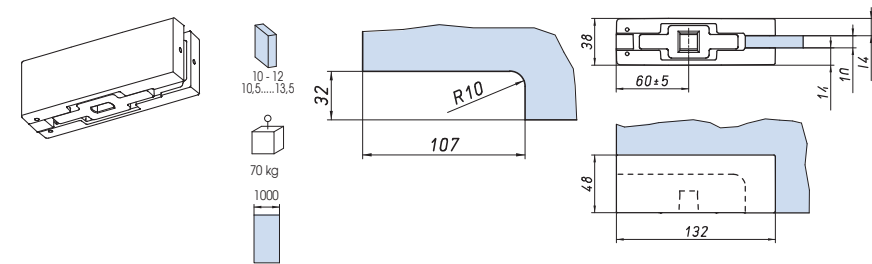


**MQ-12-I**

Cerniera inferiore per pompa Italia,  
Bottom pivot hinge for square closer  
Unteres Pendeltürband  
für Bodentürschließer mit Vierkant

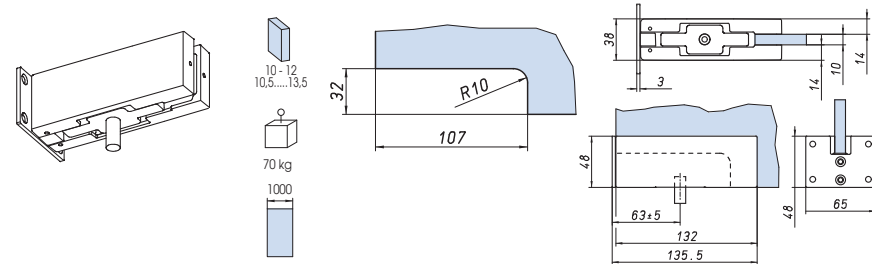
**MQ-12-T**

Cerniera inferiore per pompa Tedesca,  
Bottom pivot hinge for german closer  
Unteres Pendeltürband für  
Bodentürschließer mit flachkonischer Achse



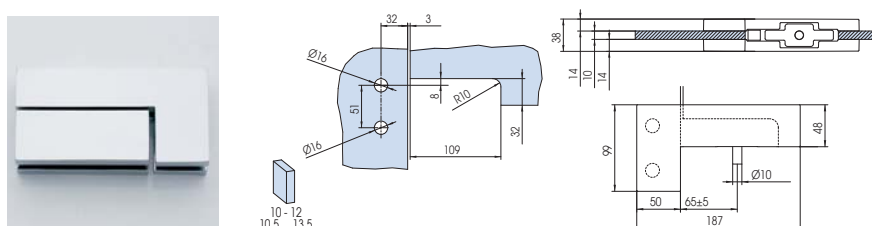
**MQ-13**

Cerniera con attacco sopra luce/muro  
perno mm. 10  
Overpanel patch with pivot 12 mm.  
and wall plate  
Oberlichtbeschlag mit Zapfen 12 mm.  
und Befestigungsglasche



**MQ-6**

Cerniera con attacco sopra luce  
vetro fisso, perno mm. 10  
Patch for overpanel and side panel  
with pivot 10 mm.  
Winkeloberlichtbeschlag  
mit Zapfen mm. 10



CR = Cromo lucido  
Polished chrome  
Chrom glänzend

NS = Nichel satinato  
Satin nickel  
Ähnlich Edelstahl matt



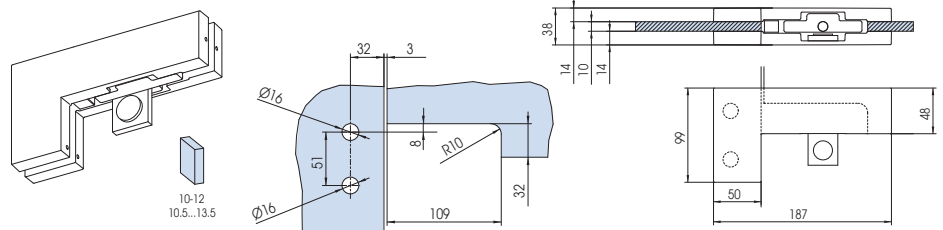
# VETROMARKET

di Francesco Vistocco

## Porte esterne MODULO QUADRO

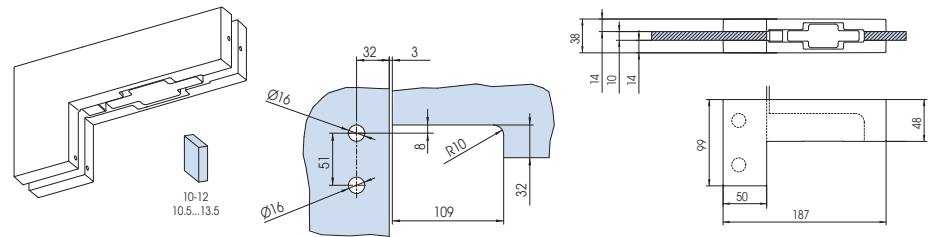
### MQ-4

Cerniera con attacco soprauce vetro fisso con battuta.  
Patch for overpanel and side panel with stop.  
Winkeloberlichtbeschlag mit Anschlag.



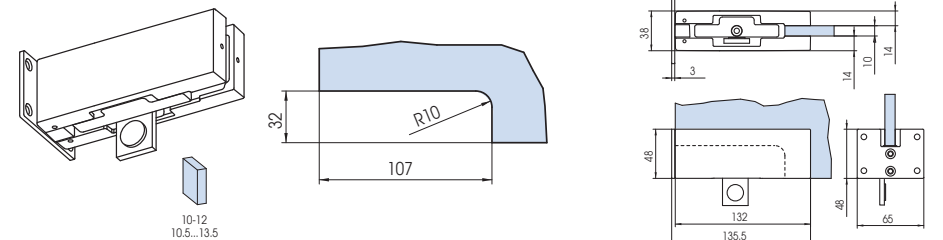
### MQ-8

Cerniera con attacco soprauce vetro fisso con inserto cieco.  
Patch for overpanel and side panel with blind insert.  
Winkeloberlichtbeschlag mit Blindeinsatz.



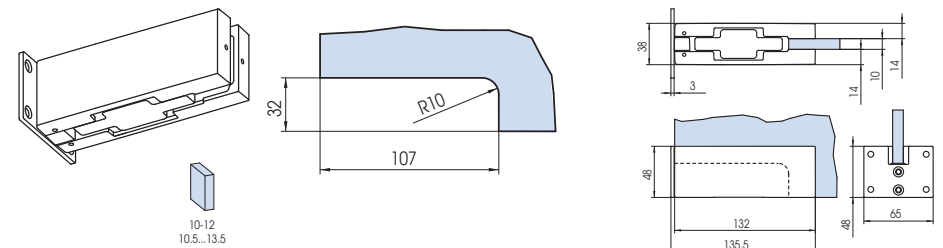
### MQ-14

Cerniera soprauce/muro con battuta.  
Overpanel patch with stop and wall plate.  
Oberlichtbeschlag mit Anschlag und Befestigungslaschez.



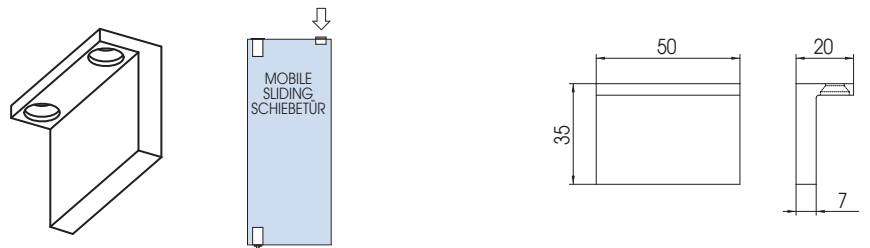
### MQ-16

Cerniera regolabile con attacco a soprauce e fisso laterale.  
For overpanel and side panel.  
Winkeloberlichtbeschlag.



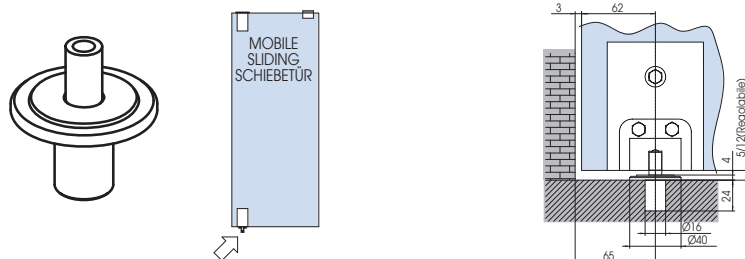
### MQ-5

Battuta per porta singola.  
Single-stop with ceiling installation.  
Anschlag für Deckenbefestigung 1-fig.



### MQ-3

Pozzetto inferiore con perno regolabile per MQ-1.  
Floor installation bottom pivot ball-bearing for MQ-1.  
Anschlag für Bodenbuchse Kugelgelagert für MQ-1



CR = Cromo lucido  
Polished chrome  
Chrom glänzend

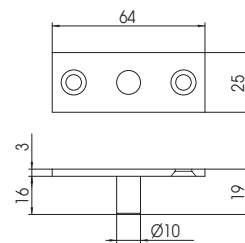
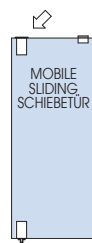
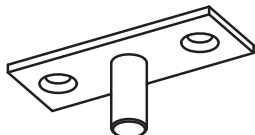
NS = Nichel satinato  
Satin nickel  
Ähnlich Edelstahl matt



## Porte esterne MODULO QUADRO

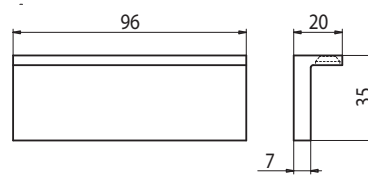
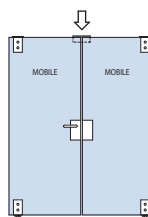
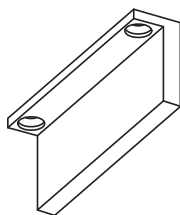
### MQ-7

Perno superiore rettangolare  
Rectangular top pin.  
Oberer zapfen eckig



### MQ-10

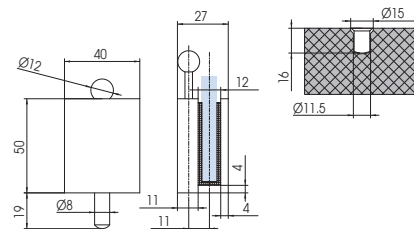
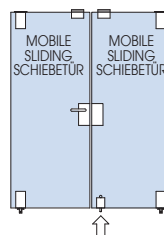
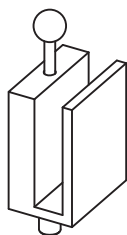
Battuta per porta doppia  
Double stop with ceiling installation.  
Doppelteranschlag  
für Deckenbefestigung 2-flg



### V-003-8

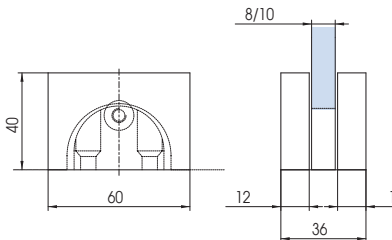
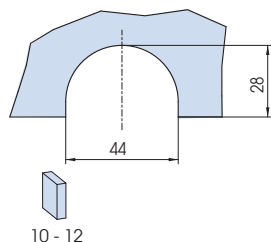
### V-003-10

Fermaporta arrotondato per porta  
doppia. vetro 8 o 10 mm.  
Locking bolt for double door-glass 8  
mm. or 10 mm.  
Feststeller für 2-flg. Glas 8/10 mm.



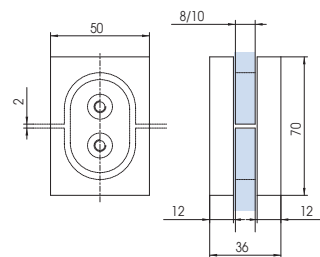
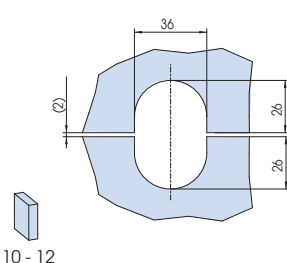
### MQ-9

Supporto vetro fisso.  
Wall connector.  
Wandhalter.



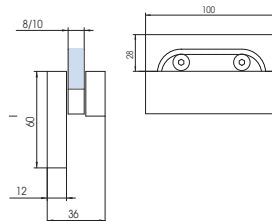
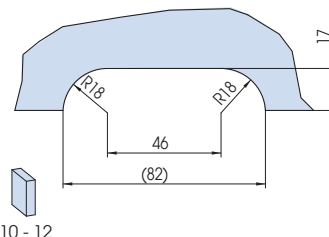
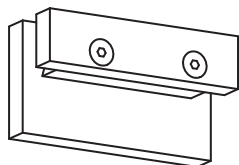
### MQ-15

Morsetto per aggancio due vetri.  
Connector.  
Verbindungsbeslag.



### MQ-17

Battuta per porta doppia  
con attacco a sopra luce  
Double stop fixed on overpanel.  
Doppelteranschlag am Oberlicht





# VETROMARKET

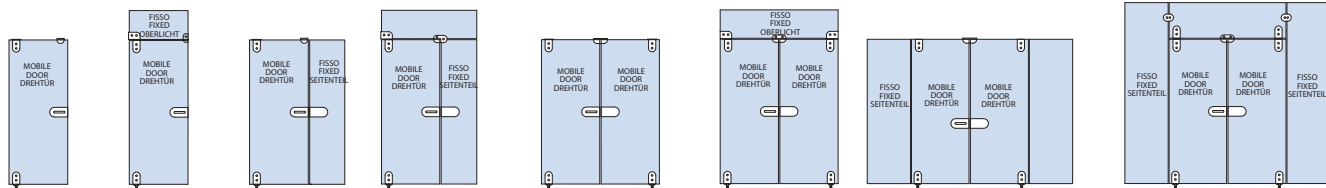
*di Francesco Vistocco*

Porte esterne MODULO SYSTEM



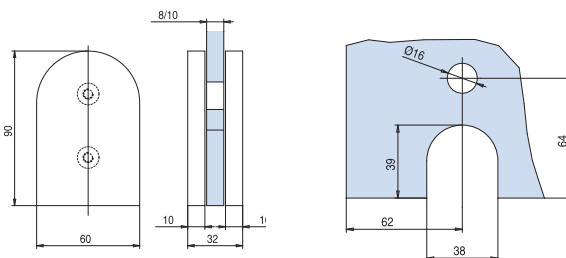


## Porte esterne MODULO SYSTEM



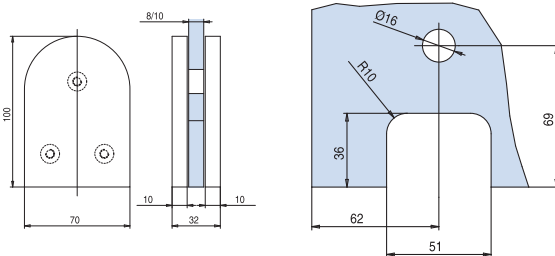
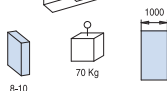
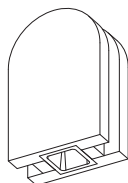
### M1

Cerniera inferiore / superiore.  
Top / bottom patch  
Oberes / Unteres Pendeltürband.



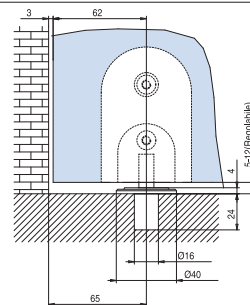
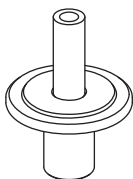
### M2-I

Cerniera inferiore per pompa Italia,  
Bottom pivot hinge for square closer  
Unteres Pendeltürband  
für Bodentürschließer mit Vierkant



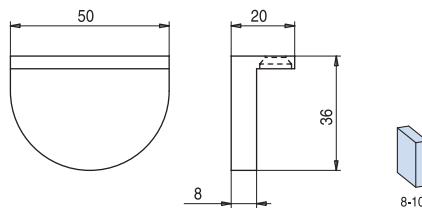
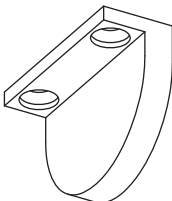
### M2-T

Cerniera inferiore per pompa Tedesca,  
Bottom pivot hinge for german closer  
Unteres Pendeltürband für  
Bodentürschließer mit flachkonischer Achse



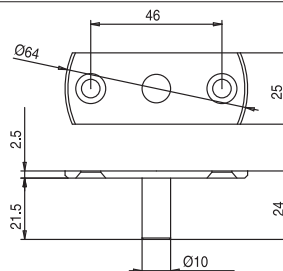
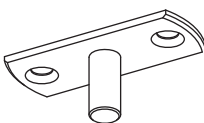
### M3

Pozzetto inferiore con perno regolabile  
Floor installation bottom pivot ball bearing  
Bodenbuchse kugelgelagert  
zum Einlassen in Mauerwerk



### M5

Battuta per porta singola  
Single stop with ceiling installation  
Anschlag für Deckenbefestigung 1-fig



### M7

Perno superiore rettangolare  
Rectangular top pin  
Bodenbuchse kugelgelagert Oberer eck  
Zapfen

NS = Nichel satinato  
Satin nickel  
Ähnlich Edelstahl matt



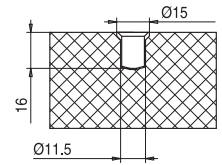
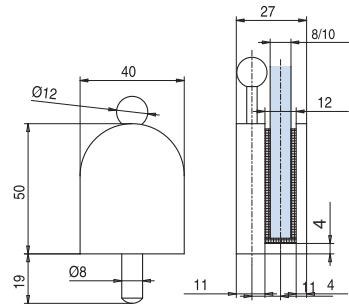
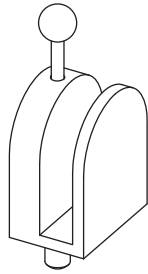
# VETROMARKET

di Francesco Vistocco

## Porte esterne MODULO SYSTEM

### M8

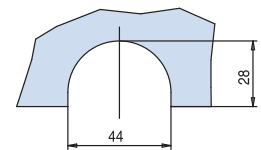
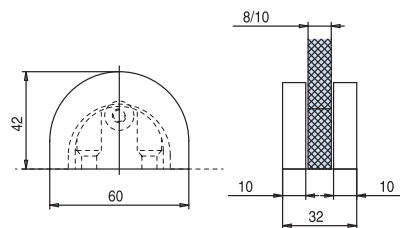
Fermaporta arrotondato  
per porta doppia  
locking bolt for double door  
Feststeller für 2-flg



8-10

### M9

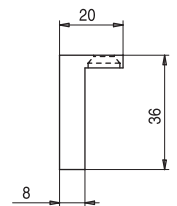
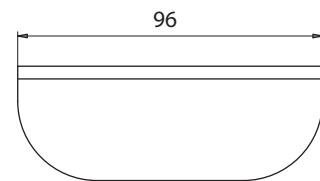
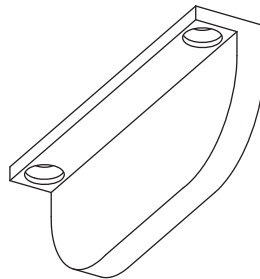
Supporto vetro fisso.  
Wall connector  
Wandhalter



8-10

### M10

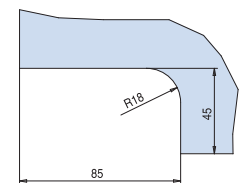
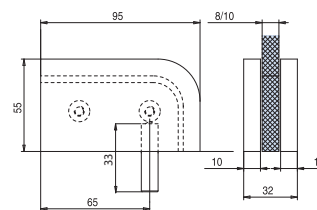
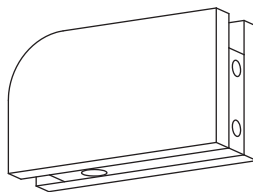
Battuta per porta doppia  
Double stop with ceiling installation  
Anschlag für Deckenbefestigung 2-flg



8-10

### M11-R

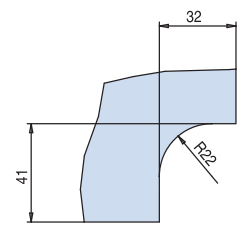
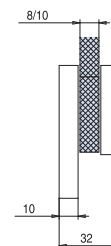
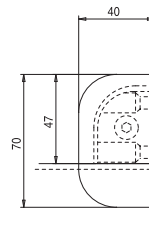
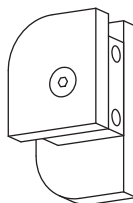
Cerniera per rotazione laterale  
con attacco a sopraluce destro  
Double Link fitting for transom  
to wall right  
Kupplung Oberlicht - Wand rechts



8-10

### M11-L

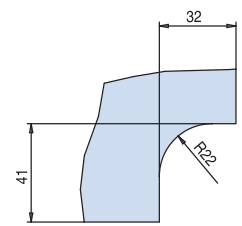
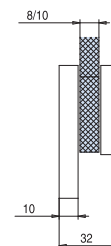
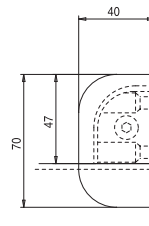
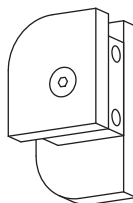
Cerniera per rotazione laterale  
con attacco a sopraluce sinistro  
Link fitting for transom to wall left  
Kupplung Oberlicht - Wand links



8-10

### M12

Battuta per porta singola con  
attacco  
a sopraluce  
Stop fixed on overpanel left / right  
Anschlag fest am Oberlicht links  
rechts



8-10

NS = Nichel satinato  
Satin nickel  
Ähnlich Edelstahl matt







# VETROMARKET

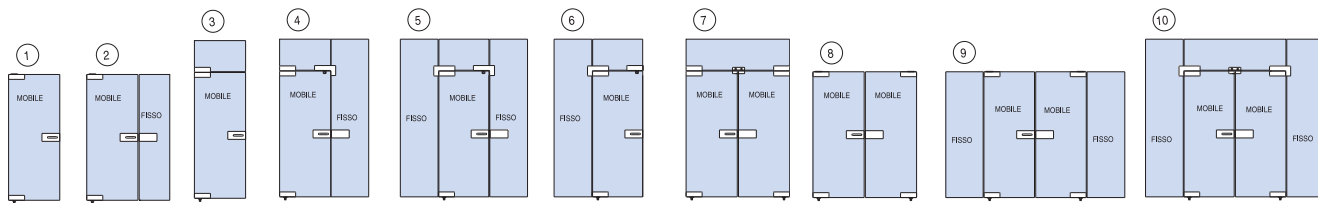
di Francesco Vistocco

## Porte esterne GARDA SYSTEM



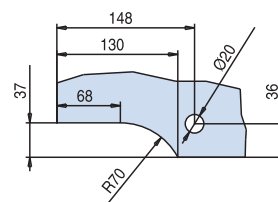
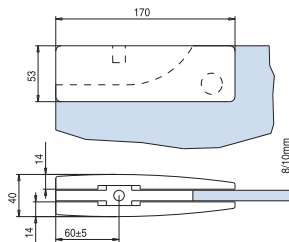
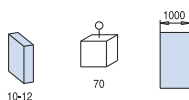


## Porte esterne GARDA SYSTEM



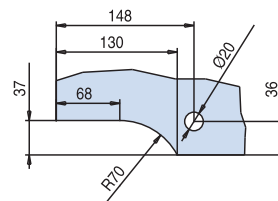
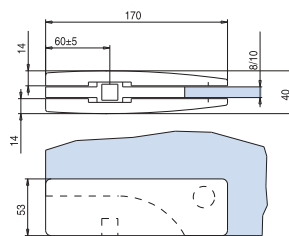
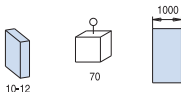
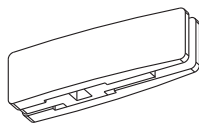
### G1

Cerniera superiore / inferiore registrabile.  
 Top / Bottom patch adjustable  
 Oberer / unterer Eckbeschlag  
 mit verstellbarem Lager.



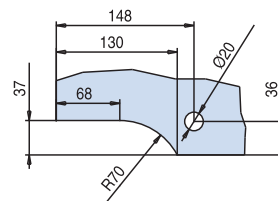
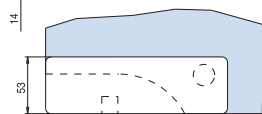
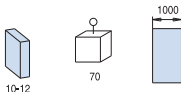
### G2-I

Cerniera inferiore per pompa Italia,  
 Bottom pivot hinge for square closer  
 Unteres Pendeltürband  
 für Bodentürschließer mit Vierkant



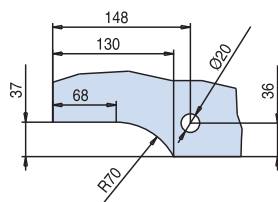
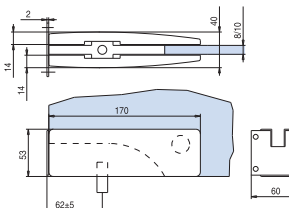
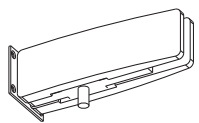
### G2-T

Cerniera inferiore per pompa Tedesca,  
 Bottom pivot hinge for german closer  
 Unteres Pendeltürband für  
 Bodentürschließer mit flachkonischer Achse



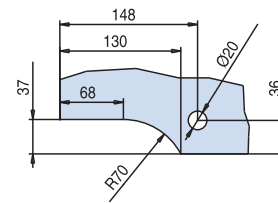
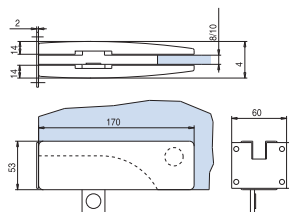
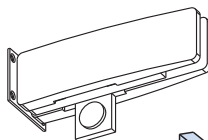
### G3

Cerniera con attacco sopra-  
 luce-muro, perno 12mm  
 Overpanel patch with pivot 12mm  
 and wall plate  
 Oberlichtbeschlag mit Zapfen  
 12mm und Befestigungslasche



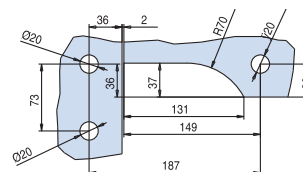
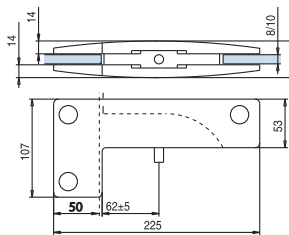
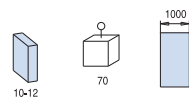
### G4

Cerniera sopra-  
 luce-muro con  
 battuta  
 Overpanel patch with stop and wall  
 plate  
 Oberlichtbeschlag mit Anschlag  
 und Befestigungslasche



### G6

Cerniera G6 attacco per sopra-  
 luce e fisso laterale con cerniera  
 superiore G1.  
 Patch G6 for overpanel and side panel  
 with Top patch G1.  
 Winkeloberlichtbeschlag G6  
 mit Zapfen und oberer Eckbeschlag  
 G1.



IX = Acciaio inox satinato  
 Satin stainless steel  
 Edelstahl matt

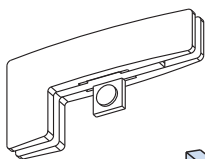
IL = Acciaio inox lucido  
 Polished stainless steel  
 Edelstahl poliert



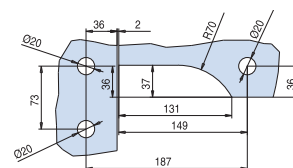
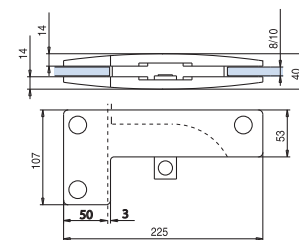
## Porte esterne GARDA SYSTEM

### G7

Cerniera con attacco  
sopraluce-vetro fisso con battuta  
*Patch for overpanel and side  
panel with stop*  
*Winkeloberlichtbeschlag  
mit Anschlag*

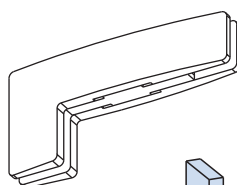


10-12

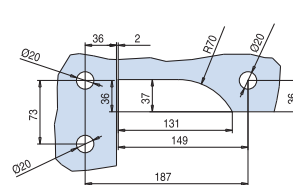
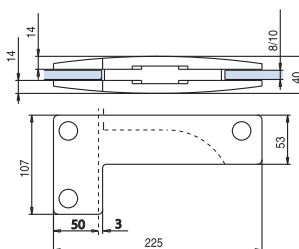


### G8

Cerniera con attacco sopraluce-  
vetro fisso con inserto cieco  
*Patch for overpanel and side panel  
with blind insert*  
*Winkeloberlichtbeschlag  
mit Blindeinsatz*

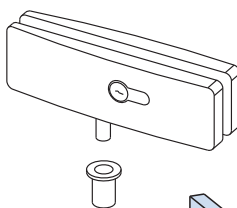


10-12

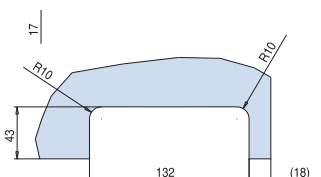
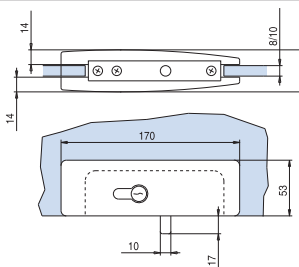


### G9

Serratura ad angolo con foro  
cilindro per pavimento  
*Corner lock for Europrofile cylinder  
for floor installation*  
*Eckschloss PZ-vorgerichtet  
für Bodenbefestigung*

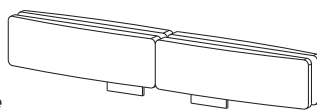


10-12

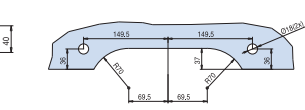
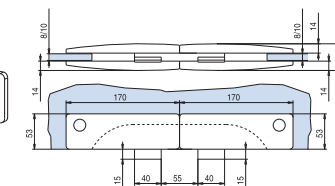


### G11

Battuta doppia con attacco  
sopraluce  
*Double stop on overpanel*  
*Doppelanschlag an der Oberlichte*

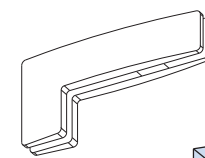


10-12

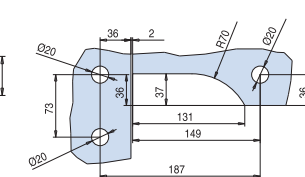
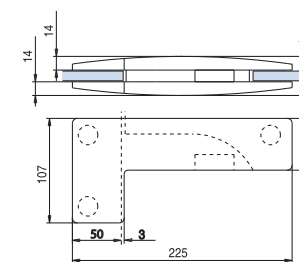


### G12

Controserratura con attacco  
sopraluce-vetro fisso per serratura  
ad angolo G13  
*Corner overpanel strike box  
for corner lock G13*  
*Winkeloberlichtgegenkasten  
für Eckschloss G13*



10-12



IX = Acciaio inox satinato  
*Satin stainless steel*  
*Edelstahl matt*

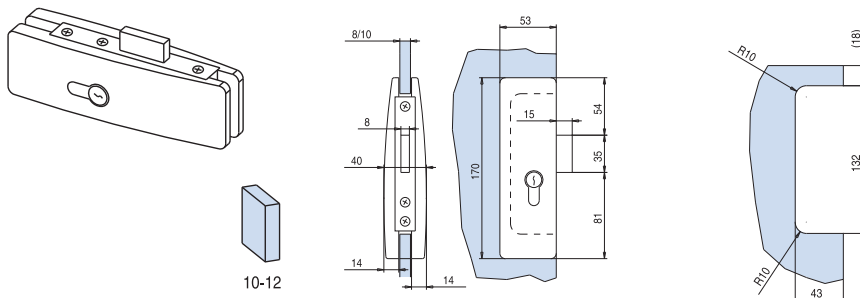
IL = Acciaio inox lucido  
*Polished stainless steel*  
*Edelstahl poliert*



Porte esterne  
**GARDA SYSTEM**

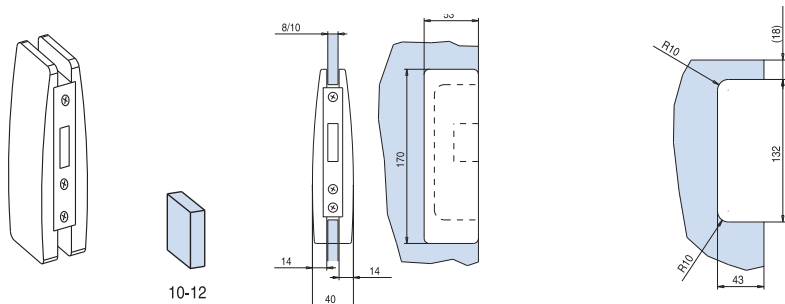
**G13**

Serratura con foro cilindro  
Lock for Europrofile cylinder  
Schloss PZ-vorgerichtet



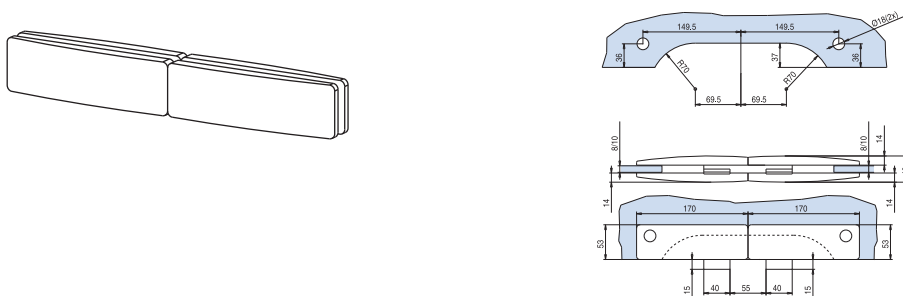
**G14**

Controserratura verticale  
per serratura G13  
Strike box for lock G13  
Gegenkasten für Mittelschloss G13



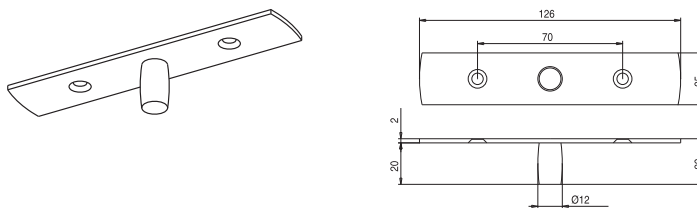
**G15**

Doppia contro serratura con  
attacco sopra luce  
Double overpanel strike patch  
fitting  
Doppeloberlichtgegenkasten



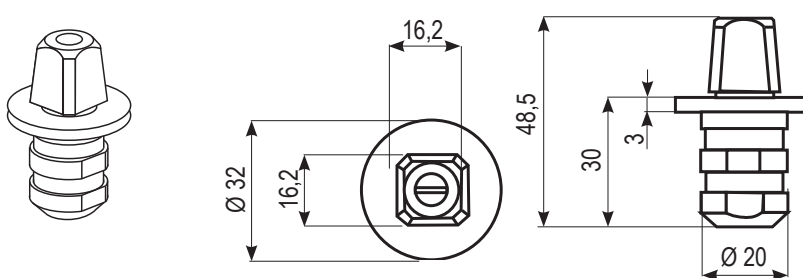
**G16**

Perno superiore  
Top pin  
Oberer Zapfen



**G17**

Piletta per cerniera  
quadro italiano per G2-I  
Bottom pin for hinges  
with italian pivot housing for G2-I  
Unterer Zapfen für Band G2-I  
Italianischen Vierkant.





# VETROMARKET

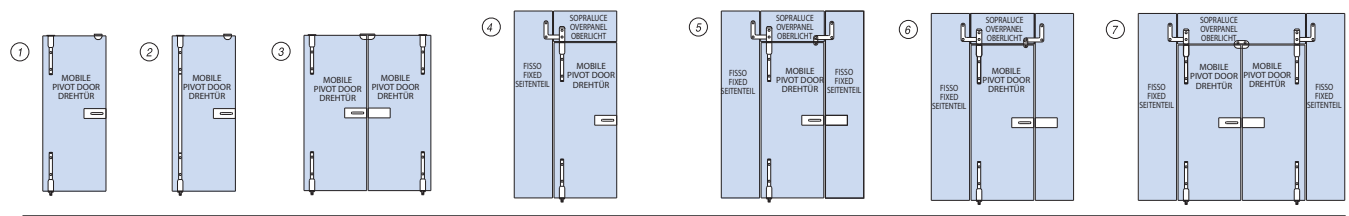
*di Francesco Vistocco*

Porte esterne PIVOTING SYSTEM



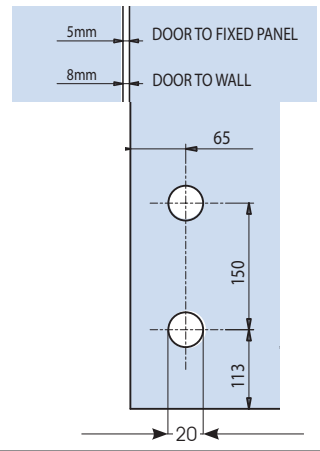
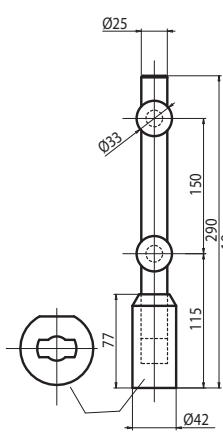


## Porte esterne PIVOTING SYSTEM



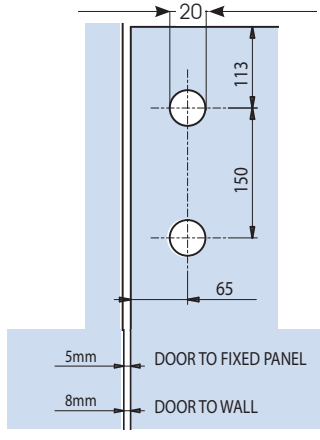
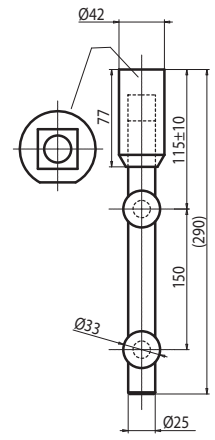
### PG1-T

Cerniera inferiore per pompa Tedesca,  
*Bottom pivot hinge for german closer*  
*Unteres Pendeltürband für Bodentürschließer mit flachkonischer Achse*



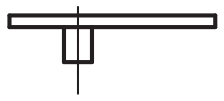
### PG-2

Cerniera superiore  
*Pivoting*  
*Pivoting Top hinge*  
*Oberes Band Pivoting*



### PG10

Perno superiore 15 mm.  
*Top pivot 15 mm.*  
*Oberer Zapfen 15 mm.*



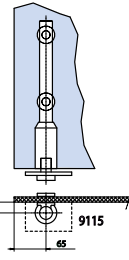
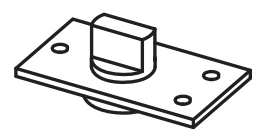
### PG11

Perno con fischer 15 mm.  
*Top centre with plug 15 mm*  
*Zapfen mit Dübel 15 mm*



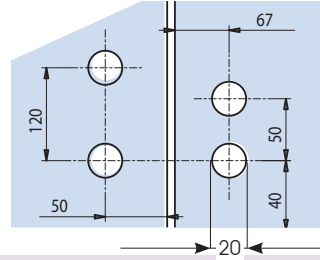
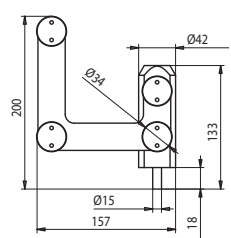
### PG - 12

Perno a pavimento  
*Pivoting con quadro tedesco.*  
*Floor pivot "Pivoting" with German profile spindle.*  
*Bodenbuchse Pivoting zum Einlassen in Mauerwerk mit flachkonischer Achse.*



### PG-5

Attacco Pivoting sopra luce vetro fisso con perno 15 mm  
*Hinge Pivoting for overpanel - side panel with pivot 15 mm*  
*Winkeloberlichtbeschlag Pivoting mit Zapfen 15 mm.*



IX = Acciaio inox satinato  
*Satin stainless steel*  
*Edelstahl matt*



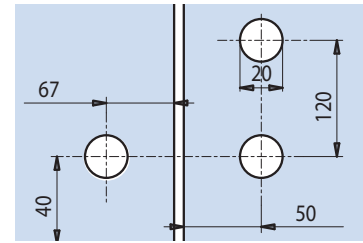
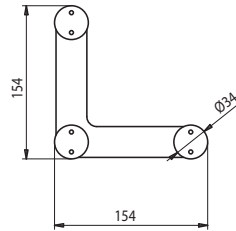
# VETROMARKET

di Francesco Vistocco

## Porte esterne PIVOTING SYSTEM

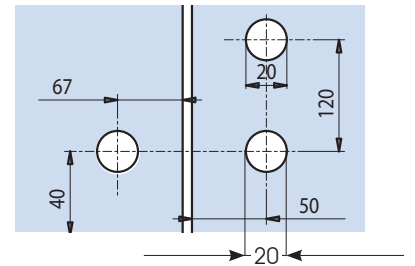
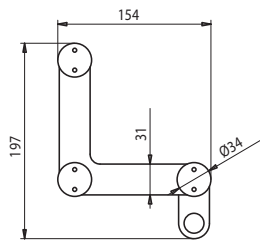
### PG-6

Attacco Pivoting sopra luce - vetro fisso.  
Connector Pivoting overpanel - side panel  
Winkeloberlichtbeschlag Pivoting mit Zapfen 15 mm.



### PG-7

Attacco Pivoting sopra luce vetro fisso con battuta  
Connector Pivoting overpanel and side panel with stop  
Oberlicht / Seitenteilverbinder Pivoting mit Anschlag.



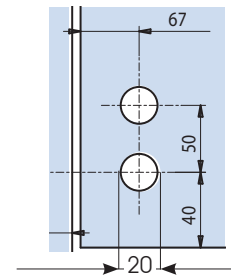
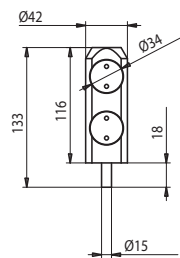
### PG-4

Prolunga per cerniere Pivoting  
Extension for hinges Pivoting  
Verlängerung für Bänder Pivoting



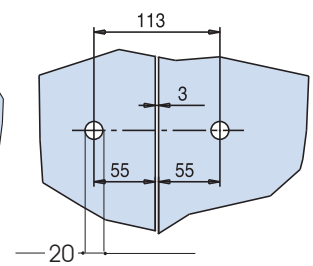
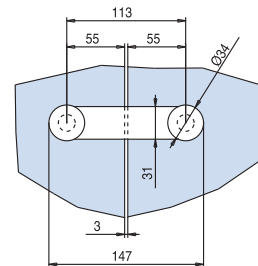
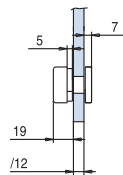
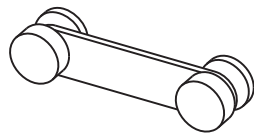
### PG-8

Attacco Pivoting sopra luce con perno 15 mm.  
Overpanel pivot with 15 mm pin.  
Oberes Drehlager mit Oberlichtbefestigung mit Zapfen 15 mm.



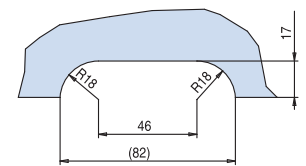
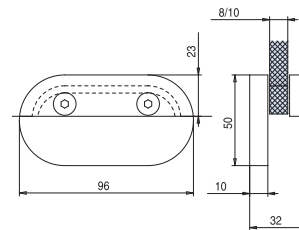
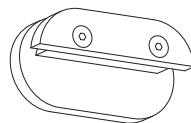
### PG-9

Morsetto Pivoting aggancio due vetri  
Connector Pivoting glass-glass  
Verbindungsbeschlag Pivoting Glas-Glas



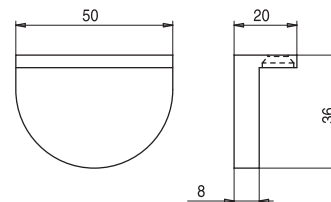
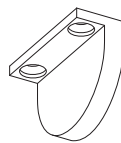
### M-13

Battuta per porta doppia con attacco a sopra luce  
Double stop fixed on overpanel  
Doppelanschlag am Oberlicht



### M-5

Battuta per porta singola  
Single stop with ceiling installation  
Anschlag für Deckenbefestigung



IX = Acciaio inox satinato  
Satin stainless steel  
Edelstahl matt

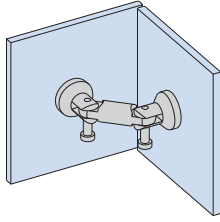




## Porte esterne PIVOTING SYSTEM

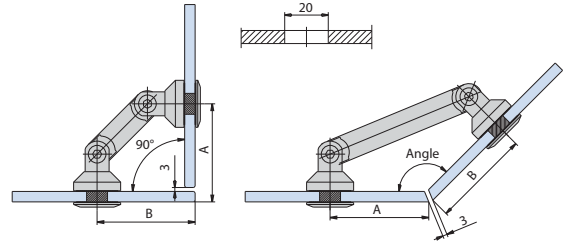
### PG-120 F

Attacco completo per vetro/vetro  
Complete connector for Glass / Glass  
Komplettbeschlag für Glas / Glas



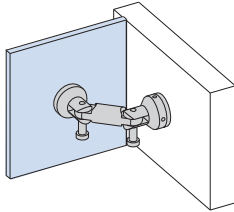
Lunghezza asta di connessione  
Length connecting rod  
Länge der Verbindungssachse

Angolo Angle Winkel	60	
	A	B
90°	80	



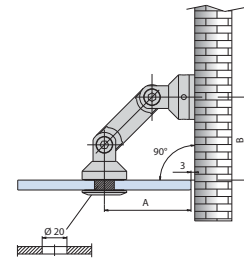
### PG-139 F

Attacco completo per vetro / muro  
Complete connector for Glass / Wall  
Komplettbeschlag für Glas / Wand



Lunghezza asta di connessione  
Length connecting rod  
Länge der Verbindungssachse

Angolo Angle Winkel	60	
	A	B
90°	72	67



Asta di connessione  
Connecting rod  
Verbindungsachsen

### PG-3011



### PG-3013



### PG-3012

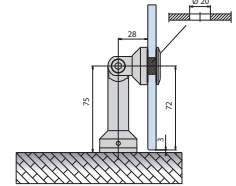
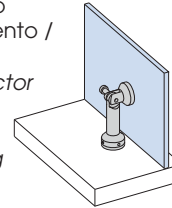


### PG-3014



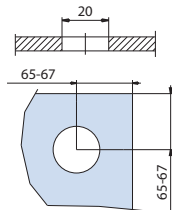
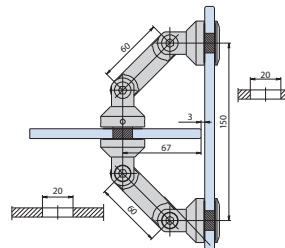
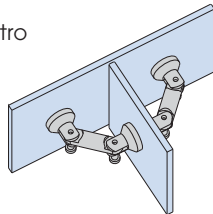
### PG-145 F

Attacco completo per vetro - pavimento / soffitto  
Complete connector for Glass - Floor/Ceiling  
Komplettbeschlag für Glas - Boden / Decke



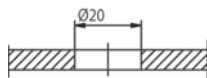
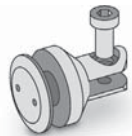
### PG-150 F

Attacco completo a 3 vie per vetro  
Complete connector 3 ways for Glass  
Komplettbeschlag für 3 Gläser



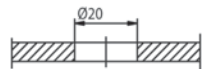
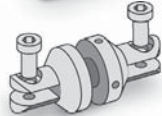
### PG-1201 F

Attacco vetro  
Pivoting glass clamp  
Schwenk - Klemmteil Glas



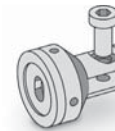
### PG-1501

Attacco doppio  
Double clamp connector  
Doppel Klemmverbindung



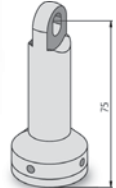
### PG-1391

Attacco a muro  
Pivoting wall fixing  
Schwenk-Klemmteil Wand



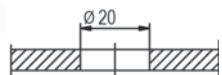
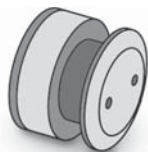
### PG-1451

Connettore pavimento/soffitto  
Floor/ceiling connector  
Boden/Deckenverbindung



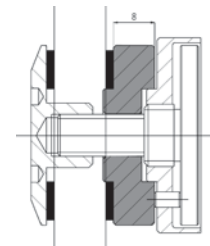
### PG-20

Fissaggio a punto D. 35 mm.  
regolabile  
Point fixing D. 35 mm.  
adjustable  
Punkthalter D. 35 mm.  
verstellbar



### PG-21

Distanziale multiplo da 8 mm  
Distance ring 8 mm.  
Distanzhalter 8 mm





# VETROMARKET

di Francesco Vistocco

## Porte esterne CHIUDIPORTA A PAVIMENTO



### VELOCITÀ DI CHIUSURA

La valvola n° 1 regola la velocità di chiusura della porta da 150° a 15°, mentre la valvola n° 2 regola la velocità della porta da 15° a 0° (scatto finale). Le velocità di chiusura sono regolabili in modo indipendente l'una dall'altra

#### CLOSING SPEED

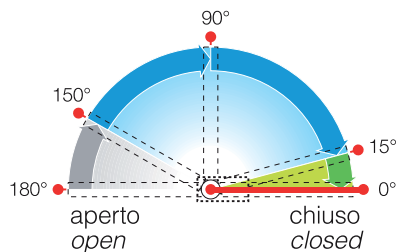
Valve n° 1 controls the closing speed from 150° to 15° and the valve n° 2 controls the latching speed from 15° to 0°.

This two valves are completely independent of each other

#### SCHLIESSGESCHWINDIGKEIT

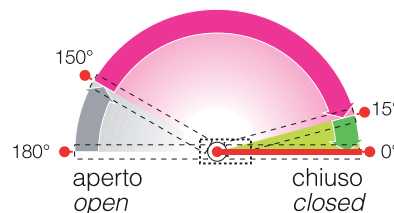
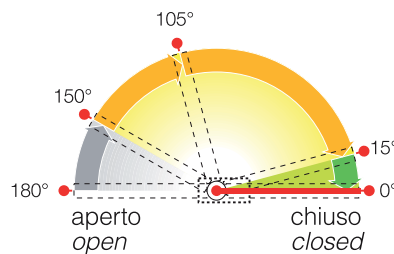
Ventil N.1 kontrolliert die Schließgeschwindigkeit von 150° auf 15° - Ventil N.2 kontrolliert die geschwindigkeit der Verriegelung von 15° auf 0° Die beiden (Ventile) sind komplett voneinander unabhängig

### FERMO/HOLD OPEN/FESTSTELLUNG



■ scatto finale / latching speed  
□ libero / free

### OPTIONAL

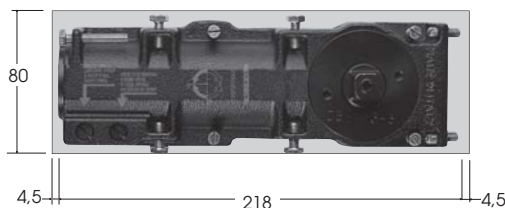
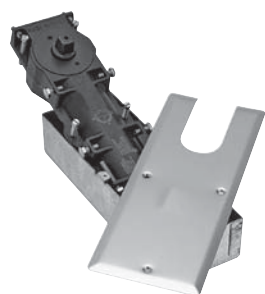


### FV-PERNO-I

Perno intercambiabile  
Quadro tedesco  
Interchangeable pivot  
German oval pivot  
Steckachse Flachkonisch

IX = Acciaio inox satinato  
Satin stainless steel  
Edelstahl matt

Porte esterne CHIUDIPIORTA A PAVIMENTO



**FV-S4003**

Chiudiporta a pavimento con perno intercambiabile.

Completo di perno italiano, scatola a cementare zincata e piastra in acciaio inox satinato AISI 304

Fermo a 90° - FORZA EN: 3 - Scatola 240 x 80 x 49

Larghezza. ANTA: mm. 900 - 1050

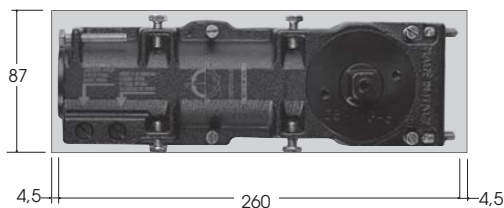
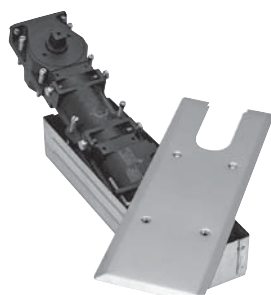
*Floor spring with interchangeable pivot, Standard with italian square pivot, cover plate in satin stainless steel AISI 304*

*Hold open at 90° - Force 3 - Cement box 240 x 80 x 49*

*Door width range: mm. 900 - 1050*

*Bodentürschließer mit austauschbare-steckachsen.*

*Standard mit Italianischen Vierkant, einschließlich Zementkasten 240 x 80 x 49 und Deckplatte aus Edelstahl matt AISI 304 - Feststellung 90° - Türbreite mm 900 - 1050*



**FV-S5003**

Chiudiporta a pavimento con perno intercambiabile.

Completo di perno italiano, scatola a cementare zincata e piastra in acciaio inox satinato AISI 304

Fermo a 90° - FORZA EN: 3 - Scatola 290 x 87 x 54

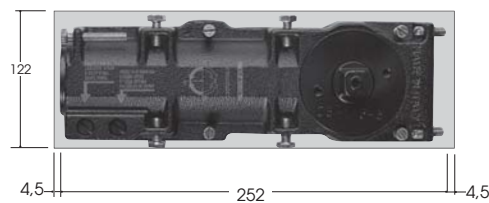
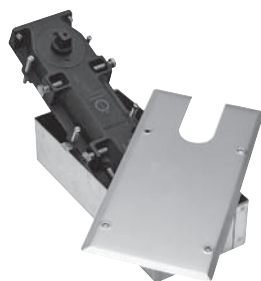
Larghezza ANTA: mm. 900 - 1050

*Floor spring with interchangeable pivot, Standard with italian square pivot, cover plate in satin stainless steel AISI 304.*

*Hold open at 90° - Force 3 Cement box 290 x 87 x 54 - Door width range: mm. 900 - 1050*

*Bodentürschließer mit austauschbare-steckachsen.*

*Standard mit Italianischen Vierkant, einschließlich Zementkasten 290 x 87 x 54 und Deckplatte aus Edelstahl matt AISI 304 - Feststellung 90° - Türbreite mm 900 - 1050*



**FV-S6003**

Chiudiporta a pavimento con perno intercambiabile.

Completo di perno italiano, scatola a cementare zincata e piastra in acciaio inox satinato AISI 304

Fermo a 90° - FORZA EN: 3 - Scatola 273 x 122 x 65

Larghezza. ANTA: mm. 900 - 1050

*Floor spring with interchangeable pivot, Standard with italian square pivot, cover plate in satin stainless steel AISI 304.*

*Hold open at 90° - Force 3 - Cement box 273 x 122 x 65Door width range: mm. 900 - 1050*

*Bodentürschließer mit austauschbare-steckachsen.*

*Standard mit Italianischen Vierkant, einschließlich Zementkasten 273 x 122 x 65 und Deckplatte aus Edelstahl matt AISI 304 - Feststellung 90° - Türbreite mm 900 - 1050*



# VETROMARKET

*di Francesco Vistocco*

Porte esterne PROFILI A SCATTO PER FISSI

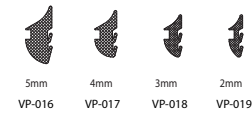
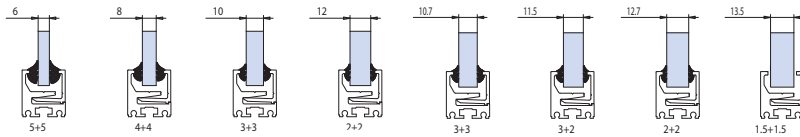
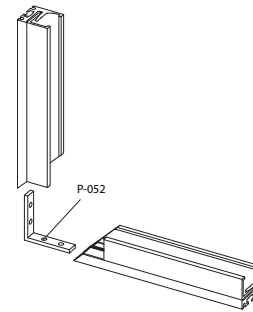
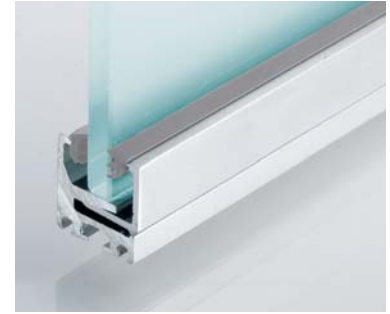
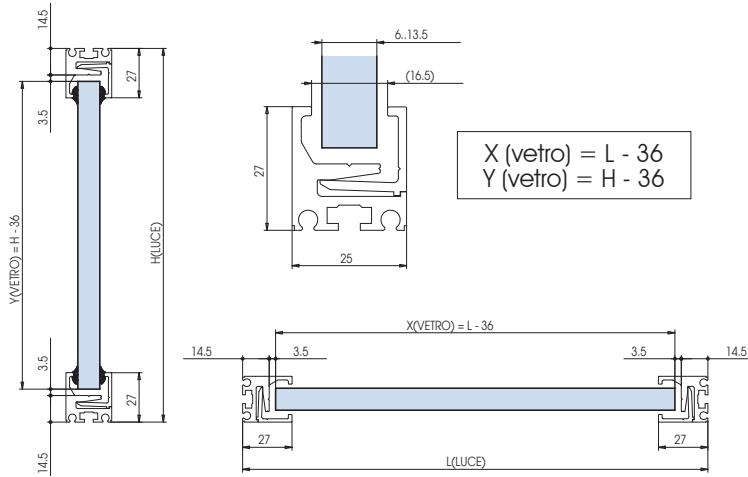




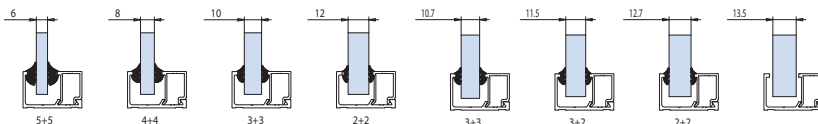
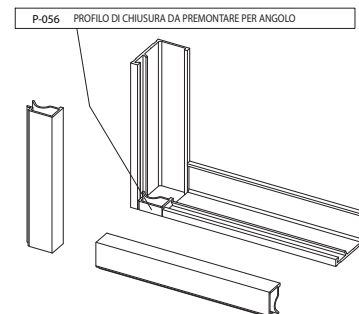
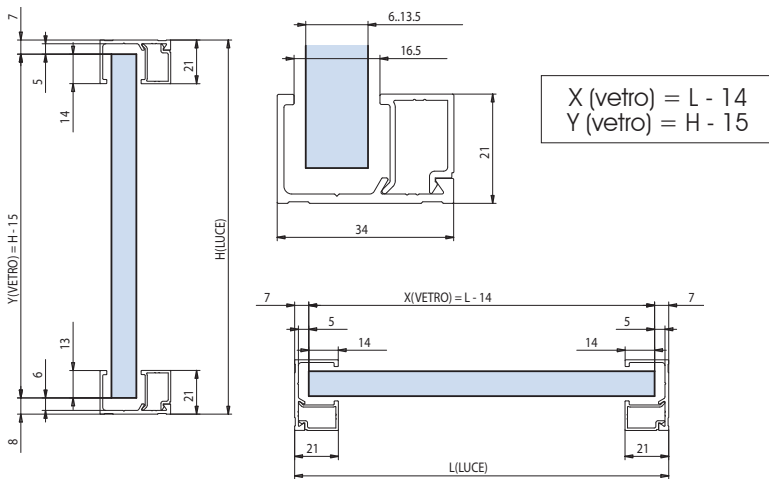
## Porte esterne PROFILI A SCATTO PER FISSI

### P-050

Esempio di utilizzarvi spessori vetro con differenti guarnizioni  
 Ex. use of different thickness with different gaskets.  
 Beispiel verwendung verschiedene Glasstärke mit Dichtungen im Programm



### P-055



### P-050

AN = Alluminio anodizzato  
 Aluminium anodized  
 Aluminium Silberfarbig

CR = Cromo lucido  
 Polished chrome  
 Chrom glänzend

### P-055

AN = Alluminio anodizzato  
 Aluminium anodized  
 Aluminium Silberfarbig



# VETROMARKET

di Francesco Vistocco

## Porte esterne PINZA MORSETTI

### P-020

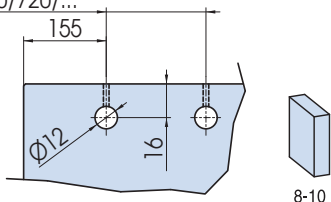
Pinza continua  
Wall connecting profile system  
Wandanschlussprofil

AN

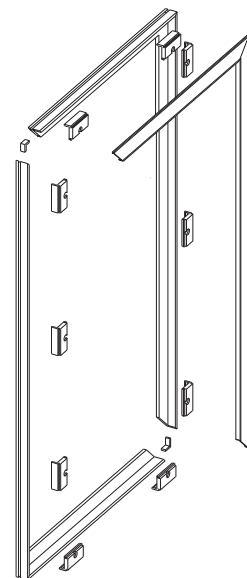
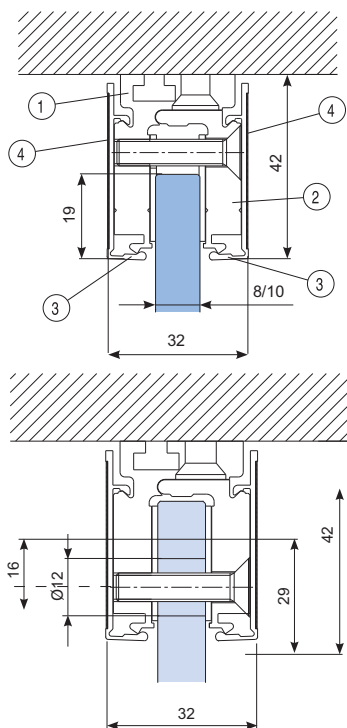


Fori vetro sicurezza  
Safety holes in glass  
Sicherheit Bohrungen in Glas

240/480/720/...



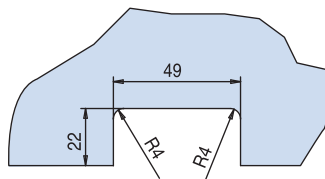
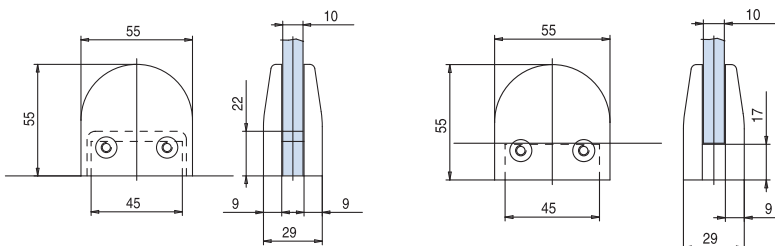
8-10



### V-017

Morsetto tondo per vetri fissi o scale  
Clamp for fixed glass panels  
or for stairs glass panels  
Glashalter für feste Glasplatten  
oder für Glastreppen

CS - NS - CR - OL - CP

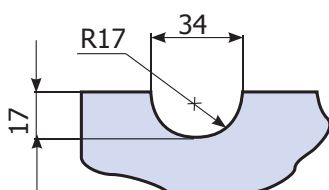


8-10-12

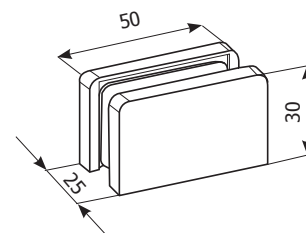
### V-038

Morsetto per vetri fissi  
Clamp for fixed glass panels  
Glashalter für feste Glasplatten

AN - NS - CR



8-10-12



NS = Nichel satinato  
Satin nickel  
Ähnlich Edelstahl matt

CS = Cromo satinato  
Satin chrome  
Chrom matt

AN = Alluminio anodizzato  
Aluminium anodized  
Aluminium Silberfarbig

OL = Ottone lucido  
Polished brass  
Messing poliert

CP = Cromo perla  
Chrome perla similar alu  
Chrom perla ähnlich Alu

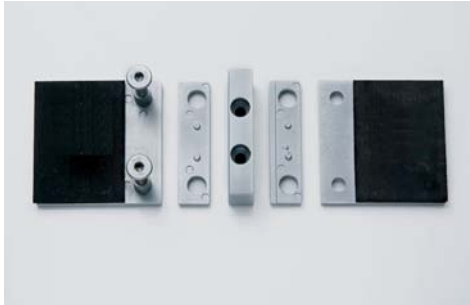
CR = Cromo lucido  
Polished chrome  
Chrom glänzend



# VETROMARKET

di Francesco Vistocco

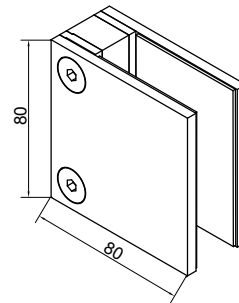
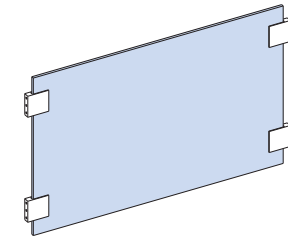
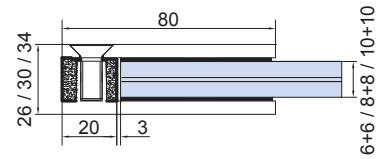
## Porte esterne PINZA MORSETTI



### V-016

Morsetto per parapetti per vetro stratificato senza foro nel vetro  
*Clamp for railings laminated glass without glass preparation*  
*Klemmbeschlag für Geländer VSG Glas ohne Glasbearbeitung*  
6+6, 8+8, 10+10

CP - NS effetto inox



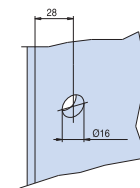
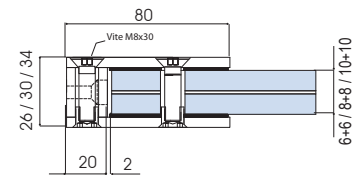
Senza foro nel vetro  
*Without glass hole*  
*Ohne Glasbohrung*



### V-015

Morsetto per parapetti per vetro stratificato  
*Clamp for railings laminated glass*  
*Klemmbeschlag für Geländer VSG Glas*  
6+6, 8+8, 10+10

CP - NS effetto inox



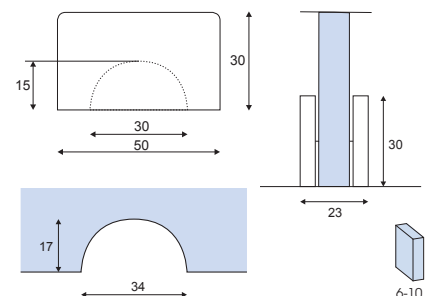
Foro nel vetro  
*Glass hole*  
*Glasbohrung*



### V-005

Morsetto per vetri fissi.  
Materiale: Zama.  
*Clamp for fixed glass panels.*  
Material: Zama.  
*Glashalter für feste Glasplatten.*  
Material: Zama.

CP - CR - NS



alluminio CP - effetto inox NS  
*aluminium CP - inox effect NS*  
*Aluminium CP - inox effekt NS*



# VETROMARKET

di Francesco Vistocco

## Porte esterne PINZA MORSETTI

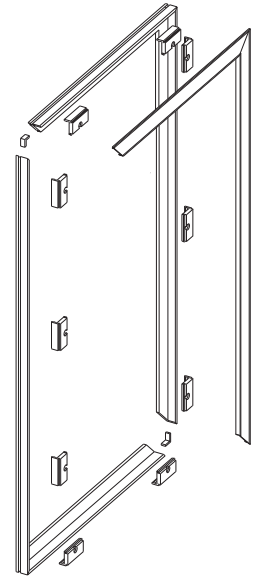
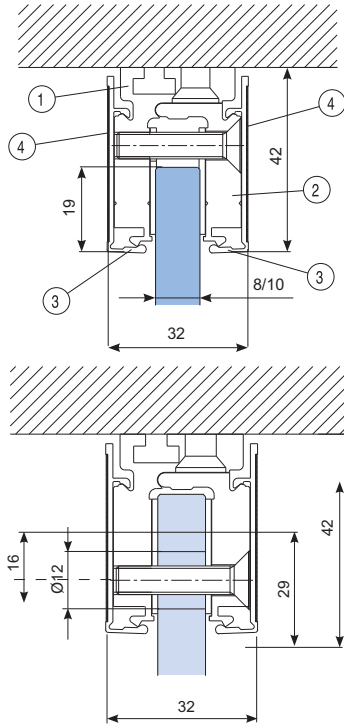
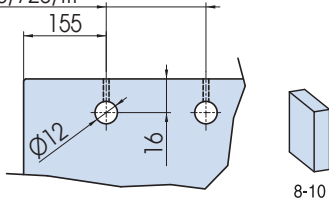
### P-020

Pinza continua  
Wall connecting profile system  
Wandanschlussprofil  
AN



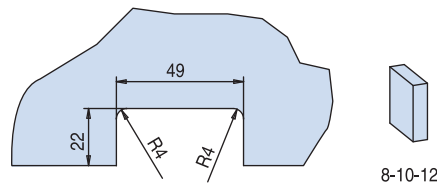
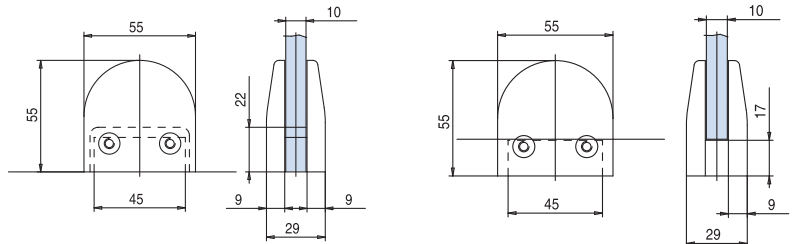
Fori vetro sicurezza  
Safety holes in glass  
Sicherheit Bohrungen in Glas

240/480/720/...



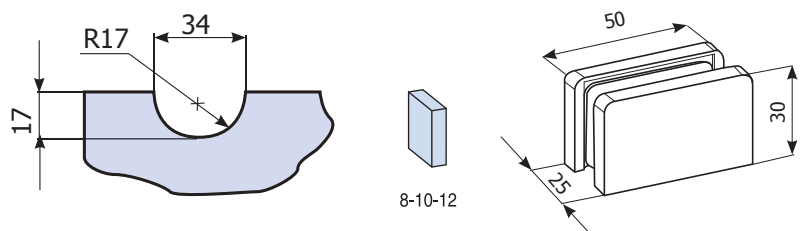
### V-017

Morsetto tondo per vetri fissi o scale  
Clamp for fixed glass panels  
or for stairs glass panels  
Glashalter für feste Glasplatten  
oder für Glastreppen  
CS - NS - CR - OL - CP



### V-038

Morsetto per vetri fissi  
Clamp for fixed glass panels  
Glashalter für feste Glasplatten  
AN - NS - CR



NS = Nichel satinato  
Satin nickel  
Ähnlich Edelstahl matt  
CS = Cromo satinato  
Satin chrome  
Chrom matt

AN = Alluminio anodizzato  
Aluminium anodized  
Aluminium Silberfarbig  
OL = Ottone lucido  
Polished brass  
Messing poliert

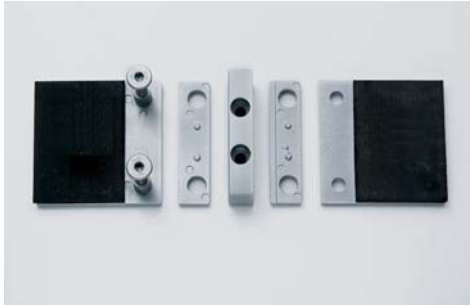
CP = Cromo perla  
Chrome perla similar alu  
Chrom perla ähnlich Alu

CR = Cromo lucido  
Polished chrome  
Chrom glänzend





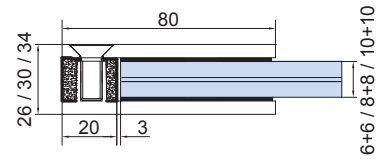
## Porte esterne PINZA MORSETTI



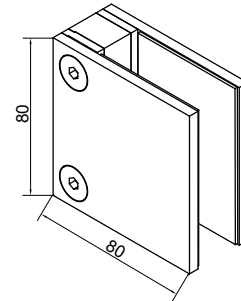
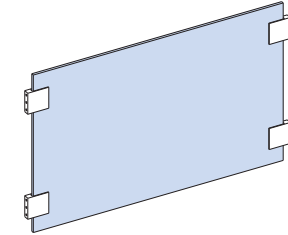
### V-016

Morsetto per parapetti per vetro stratificato senza foro nel vetro  
*Clamp for railings laminated glass without glass preparation*  
*Klemmbeschlag für Geländer VSG Glas ohne Glasbearbeitung*  
6+6, 8+8, 10+10

CP - NS effetto inox



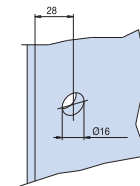
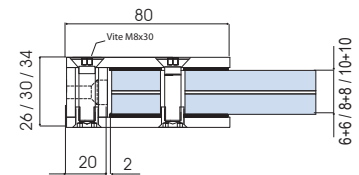
Senza foro nel vetro  
*Without glass hole*  
*Ohne Glasbohrung*



### V-015

Morsetto per parapetti per vetro stratificato  
*Clamp for railings laminated glass*  
*Klemmbeschlag für Geländer VSG Glas*  
6+6, 8+8, 10+10

CP - NS effetto inox



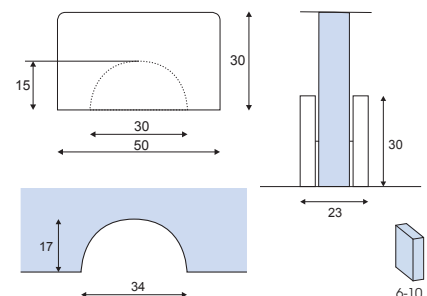
Foro nel vetro  
*Glass hole*  
*Glasbohrung*



### V-005

Morsetto per vetri fissi.  
Materiale: Zama.  
*Clamp for fixed glass panels.*  
Material: Zama.  
*Glashalter für feste Glasplatten.*  
Material: Zama.

CP - CR - NS



alluminio CP - effetto inox NS  
*aluminium CP - inox effect NS*  
*Aluminium CP - inox effekt NS*